

10

9

8

7

6

5

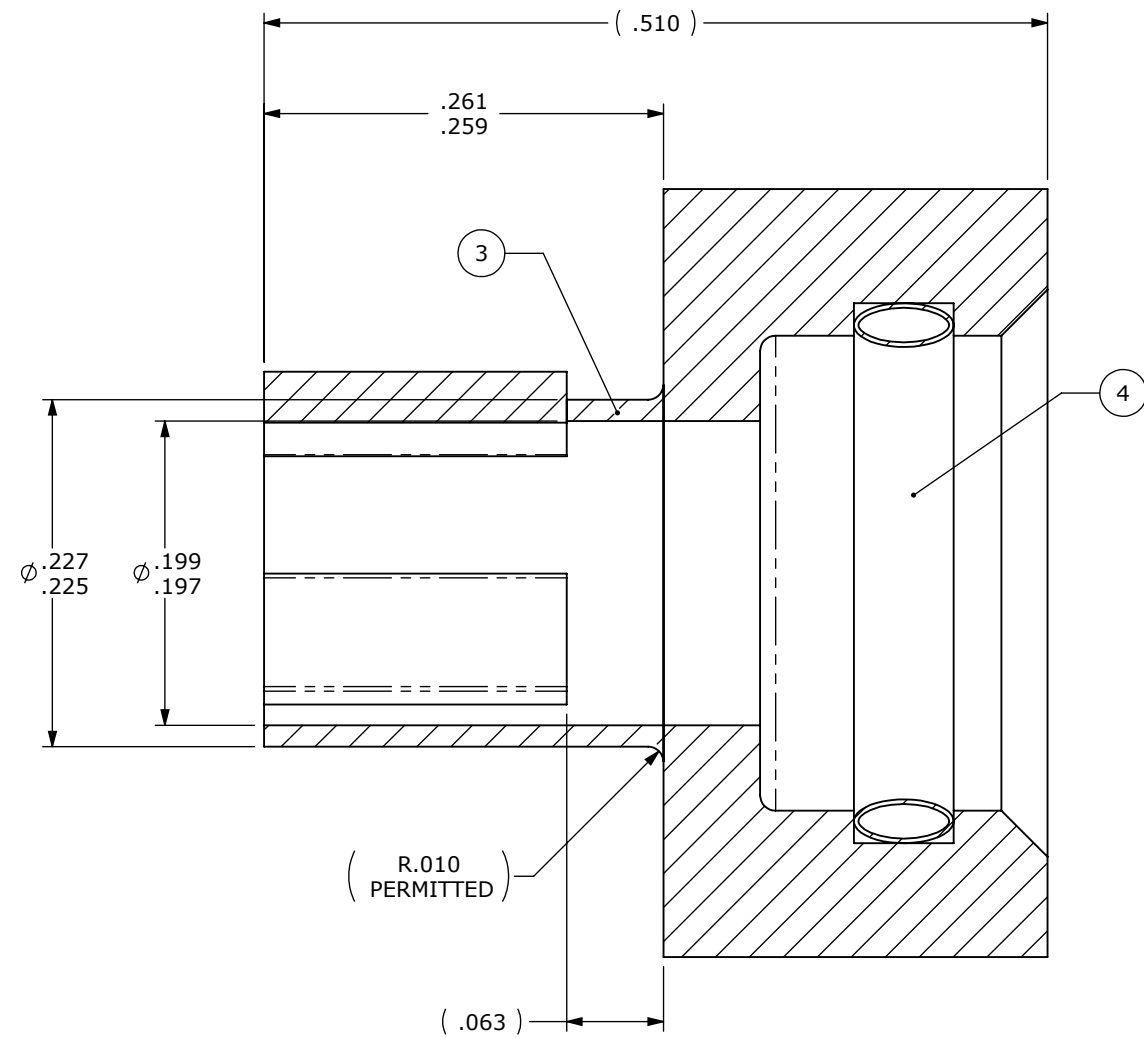
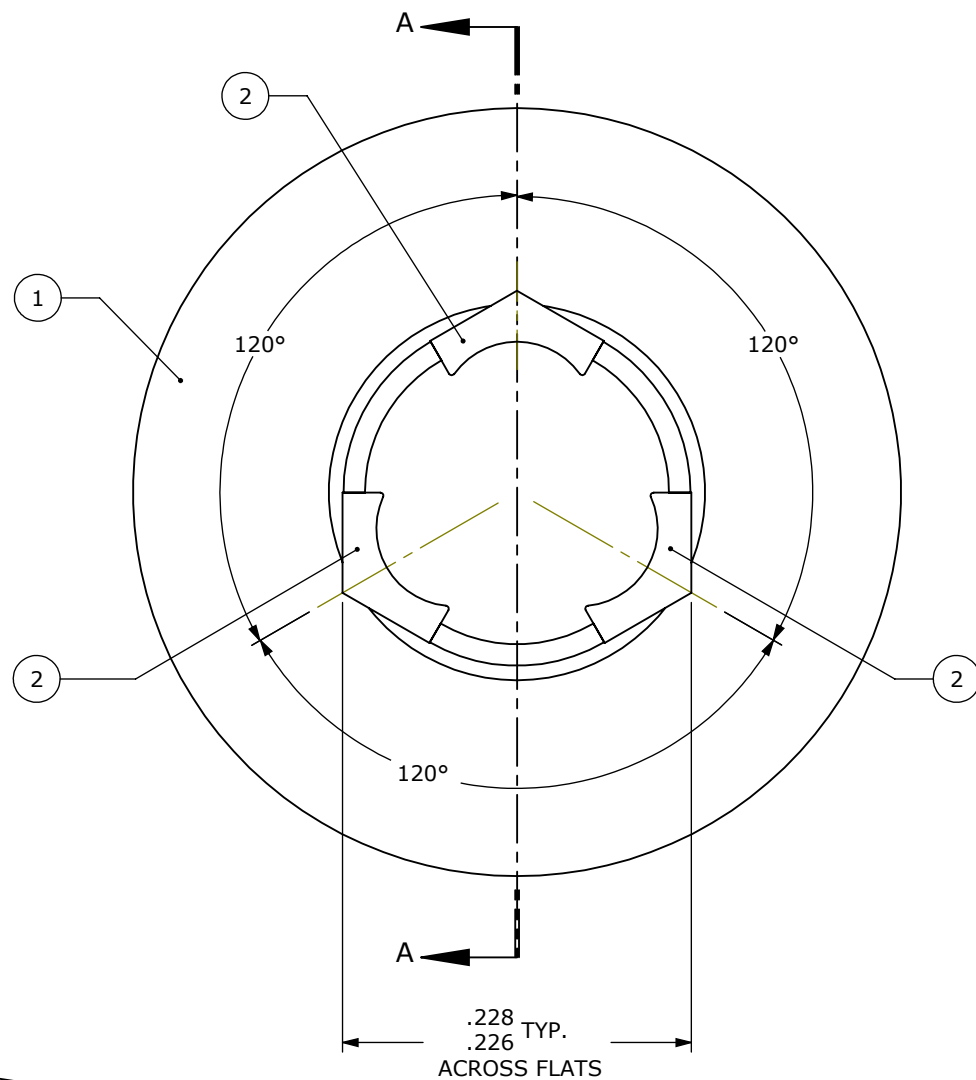
4

3

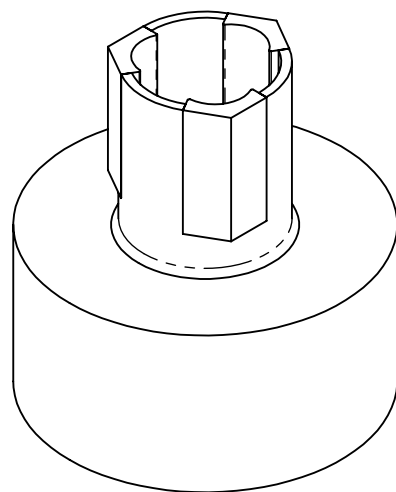
NOTES:

- 1. BAL SEAL SPRING IS PN #100MB-(.307)-302-SOW
- 2. MEMBRANE CAN BE EITHER RUBBER OR SILCONE BASED ELASTOMER, 30 DUROMETER.

ZONE	REV	DESCRIPTION	DATE	APPROVED



SECTION A-A



ITEM NO.	PartNo	DESCRIPTION	QTY.
1	DFH1M6-0603	RETAINER	1
2	DFH1M6-0602	JAW	3
3	DFH1M6-0605	MEMBRANE	1
4	DFH1M6-0771	BAL SEAL SPRING	1

MATERIAL N/A	UNLESS OTHERWISE SPECIFIED DIMENSIONS ARE IN INCHES PER ASME Y14.5-1994 TOL ON ANGLE ± 0.5 DEG REMOVE BURRS AND SHARP CORNERS MACH SURFACES 3.2 MAX	PROPRIETARY AND CONFIDENTIAL THE INFORMATION CONTAINED IN THIS DRAWING IS THE SOLE PROPERTY OF LUCAS TECHNICAL SERVICES. ANY REPRODUCTION IN PART OR AS A WHOLE WITHOUT THE WRITTEN PERMISSION OF LUCAS TECHNICAL SERVICES IS PROHIBITED.	40 CLARENDON DR. EASTON, PA 18040 www.LucasTechnical.com info@LucasTechnical.com 484-553-5965
HEAT TREAT N/A		CLIENT LIGHTNING FASTENER	DRAWING TITLE JAW ASSEMBLY
FINISH N/A		DWN BY LTAYLOR	1/3/2011
		CKD BY N/A	N/A
			133 N. Goodman Rd. Lake Charles, LA 70615
			PART NO. REV SHEET A 1 of 1